

*Better Service*

*Better Performance*



**Dartmon**



*For Your Better Experience*

**AS330PLUS**  
**Fully Automatic IHC Stainer**

**Shenzhen Dartmon Biotechnology Co.,Ltd.**

Add: 901, Building C, Jinweiyuan industrial Park,  
Julongshan District, Pingshan, Shenzhen, China  
Tel:+8675586161828 Fax:+8675586161838  
Website: www.dartmon.com  
Email: intl-market@dartmon.com



Product specifications are subject to change without notice. Please refer to the latest technical data and product registration information.  
Internal information for reference use only

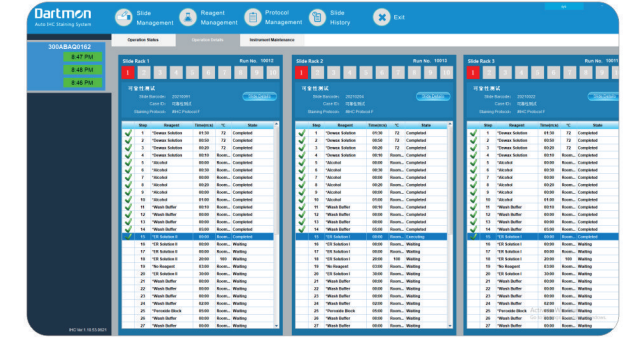
**CFDA** **CE** **IVD** **EN ISO**

# ADVANCED TECHNOLOGY

- Through the innovative STIR® solid-liquid mixing technology and SWEEP® cleaning technology, overcome the core problem of insufficient reaction due to the inability of the antibody to fully penetrate the tissue, and ensure the uniform coverage of the antibody on the entire slide.
- Independent heater to ensure independent and accurate temperature control for each slide.
- High-sensitive liquid level detection technology to effectively avoid the waste of antibodies.
- Automatic lighting for better observation in reaction chamber and ancillary station.



3 independent slide trays ensuring continuous loading



Real-time monitoring of each test step



LED Display of the test remaining time



Reagent addition at any time of the operation



UPGRADED AND COMPLETE SOLUTION  
FOR BETTER PERFORMANCE

## SENSITIVE DETECTION SYSTEM

- Unique miniature polymer and antibody (FAB') labeling technology enables the polymer more accessible to cells, increasing the reagent sensitivity.
- Accurate and reliable Detection System is suitable for universal antibodies.

## ENHANCED ANCILLARY REAGENT

- Specially made reagents to match better with the whole system for stable and good performance.

## QUALIFIED ANTIBODY

- Clinically validated Ready-To-Use antibodies



## Fully Automatic IHC Stainer

### Technical Specifications

<p><b>Instrument</b></p> <p><b>Operation Software</b></p>	<p>Fully automated from baking to counterstaining</p> <p>Can connect up to 5 instruments</p> <p>Flexible protocol settings</p> <p>Real time monitoring</p> <p>Instant Alarm of Alert or Notification</p>
<p><b>Informatic</b></p> <p><b>Application Range</b></p> <p><b>Applicable Tissue</b></p>	<p>Connect to LIS through restful API</p> <p>IHC, FISH*</p> <p>All tissue types, made into Paraffin section or Frozen section</p>
<p><b>Staining Mode</b></p> <p><b>Slide Tray Chamber</b></p> <p><b>Slide Positions</b></p> <p><b>Reagent Positions</b></p> <p><b>Reagent Consumption</b></p> <p><b>Reagent Addition</b></p> <p><b>Liquid Level Detection</b></p> <p><b>Temperature Control</b></p> <p><b>Test Time</b></p> <p><b>Test Remaining Time</b></p>	<p>Single Stain, Double Stains*, Multi-Stains*</p> <p>3 chambers work independently</p> <p>30 slides</p> <p>36 positions</p> <p>120ul</p> <p>Support for adding all reagents during operation</p> <p>Precise detection sensors</p> <p>Independent heater, up to 100°C</p> <p>≤3.5 hours (depending on the protocol)</p> <p>LED display on the instrument window and display in the software interface</p>
<p><b>Waste Management</b></p>	<p>The waste is separately collected into hazardous and bulk waste bottle</p>
<p><b>Recognition System</b></p>	<p>Automatic scanning of slide and reagent information</p>
<p><b>Probe</b></p> <p><b>Ancillary Bottle</b></p> <p><b>Bulk Waste Bottle</b></p> <p><b>Hazardous Waste Bottle</b></p>	<p>Made of Teflon coated titanium alloy</p> <p>2.5L/bottle</p> <p>≥18L/bottle</p> <p>2.5L/bottle</p>

- **INNOVATIVE**
- **RELIABLE**
- **EFFICIENT**



\* Under development